



# Extensive & Potent Clinically-Tested Support for GI Health



Clinically-Studied  
Ingredients



Gluten &  
Soy Free

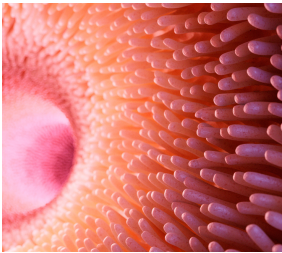


Vegetarian  
Friendly



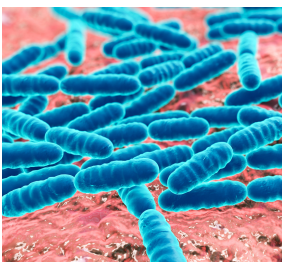
Satisfaction  
Guaranteed

## The Best Thing You Can Do For Your Body Is Take Care Of Your GI Tract!



### Stop Leaky Gut

Leaky gut happens when the tight junctions along intestinal walls lose their integrity and allow food particles, bacteria, and toxins to enter the body in an unnatural way leading to abdominal inflammation.



### Balance Your Gut Microbiome

There is a delicate balance between the beneficial and harmful bacteria and yeasts in our GI tract. Poor diets, high stress, and medications can negatively effect this balance and cause numerous symptoms including hormone imbalances, unhealthy food cravings, indigestion, malabsorption, and much more.



### Provide Immune System Support

Our immune system begins in the GI tract, but when our microbiome is out of balance and leaky gut develops, our front line defenses are weakened. Harmful bacteria, viruses, environmental contaminants, and other toxins enter our bodies with ease.

If you want better digestion,  
immune function, and overall health...

**You Need GI UltraMAX or GI UltraMAX Pro!**

# What's in the GI UltraMAX and GI UltraMAX Pro?

GI UltraMAX and GI UltraMAX Pro deliver the highest quality, clinically-studied, branded ingredients in a delicious powdered drink that's sure to have you wanting more.

Formulated to help rebuild the gut microbiome and support GI integrity and function, these products are unlike anything else on the market.

GI UltraMAX Pro also includes full-spectrum probiotics to help improve the gut microbiome and digestive enzymes to help support complete food digestion.

## Branded Ingredients

### Propol® A Glucomannan

(Prebiotic fiber)

This highly purified, natural fiber is highly stable allowing it to reach the large intestine where it supports beneficial bacteria, bowel regularity, weight management, and may even help support those with blood sugar control issues. All without the side effects like gas and bloating that other fibers cause.\*

### Polyphenol-C®

This blend of non-GMO vitamin C and berry polyphenols enhance the role of vitamin C in your body. Polyphenols are an abundant source of antioxidants.\*

### PepZin GI®

This unique combination of zinc and l-carnosine is highly stable throughout the GI tract to provide support for acid reflux and antioxidant activity. Antioxidants can help neutralize the free radicals that attack the lining of the GI tract.\*

### Serrazimes®

(Pro formula only)

These protease enzymes target specific proteins known to cause inflammation. By breaking down these proteins, Serrazimes® supports protein digestion and healthy immune responses.\*

### ResistAid® Larch Arabinogalactan

This prebiotic fiber has three randomized, double-blind, placebo-controlled studies behind it. These studies show an increase in healthy immune regulatory responses with a 57% increased likelihood of staying healthy compared to those taking a placebo.\*

### BFG-Immune® Beta-Glucan

BFG-Immune® studies show better functioning immune antibodies in the mucosal membrane lining of the GI tract. These antibodies attack and neutralize potentially dangerous bacteria and viruses before they can enter the bloodstream and move throughout the body.\*

### Setria® Glutathione

Glutathione is affectionately known as the "Master Antioxidant and Detoxifier" because it is used in every cell in the body to cleanse toxins. This branded form is easily absorbed and has shown in clinical trials to contribute to higher blood glutathione levels.\*

### Probi® Probiotics

(Pro formula only)

By reintroducing these clinically proven strains of beneficial bacteria to your gut you can help rebalance your microbiome.\*

## Ingredients with purpose

### Microbiome Balance Support

GI UltraMAX provides five different prebiotic fibers to feed the diverse collection of beneficial bacteria and yeasts throughout the length of the GI tract. For intensive support, our Pro formula also provides 20 billion CFUs of beneficial probiotics to help reintroduce nine different, carefully chosen strains into the microbiome.\*

### GI Strength and Integrity

By providing ingredients that help strengthen digestive health and protect the GI tract, you can give your body an opportunity to heal. Included are ingredients that naturally enhance the mucosal lining to help soothe inflammation and promote repair and others, like humic substances, that help provide the electrochemical support tight junctions need to maintain their integrity.\*

### Immune Function

Immune support ingredients help the body fight invading pathogens like viruses and bacteria and support a healthier immune response. GI UltraMAX provides extensive immune support ingredients to help limit the damage to the GI tract caused by free radicals and other toxins. Ingredients like colostrum take this a step further by helping the body regulate its immune responses to keep them from getting out of control.\*

### Detox and Regularity

Additional ingredients are provided to help keep bowel movements regular and support the body's ability to remove harmful substances.\*

**Check with your healthcare practitioner or supplement provider to purchase.**

\*These statements have not been approved by the Food and Drug Administration. This product is a dietary supplement and not intended to diagnose, treat, cure, or prevent any disease.

# GI UltraMAX

## Supplement Facts

Serving Size 1 Scoop • Servings Per Container 60

Amnt/Serv	DV%	Amnt/Serv	DV%	Amnt/Serv	DV%
<b>Prebiotic Fiber Blend</b>	<b>2500 mg</b>	Citrus Bioflavonoids	100 mg *	<b>Leaky Gut and Detox Support</b>	<b>2360 mg</b>
Glucomannan	1000 mg *	Organic Amla Extract	100 mg *	Glutathione	100 mg *
as Propol®A Konjac Root Fiber		Organic Acerola Extract	100 mg *	as Setria® Glutathione	
Larch Arabinogalactan Fiber	600 mg *	(NAC) N-Acetyl Cysteine	100 mg *	L-Glutamine	1000 mg *
as ResistAid®		Quercetin	50 mg *	Humic and Fulvic Extracts	100 mg *
Organic Agave Inulin Fiber	300 mg *	Rutin	50 mg *	Ginger Extract	50 mg *
Organic Digestion	500 mg *	Vitamin D3	50 mcg 250%	(5% Gingerols)	
Resistant Fiber		as Cholecalciferol (2,000 IU)		Sunflower Lecithin	600 mg *
Fenugreek	100 mg *	Medicinal Mushrooms	300 mg *	Fatty Acids and Phospholipids	
<b>Immune System</b>	<b>2596 mg</b>	Turkey Tail, Reishi, Maitake, Cordyceps,		Cat's Claw	20 mg *
<b>and Inflammatory Response Support</b>		Shitake, Agaricus		Marshmallow Root	20 mg *
Immulox® Colostrum	1000 mg *	1,3 Beta-Glucan Isolate	150 mg *	Prune Powder Organic	400 mg *
Curcumin	200 mg *	as BGF-Immune®		Qing Dai - Indigo Naturalis	50 mg *
(Turmeric Extract)		Selenium	55 mcg 100%	Slippery Elm Bark	20 mg *
Vitamin C	400 mg 440%	as Selenomethionine		<b>Other Ingredients:</b> Natural Fruit Flavors,	
as Non-GMO Ascorbic Acid Polyphenol - C®		Zinc-L-Carnosine Complex	45 mg *	Vanilla and Stevia Leaf Sweetener	
with Organic Fruit and Berry Polyphenols		as PepZin GI®		*Percent Daily Value not established.	
				Based on a 2,000 calorie per day diet.	

REVO621

# GI UltraMAX Pro

## Supplement Facts

Serving Size 1 Scoop • Servings Per Container 60

Amnt / Serv	DV%	Amnt / Serv	DV%	Amnt / Serv	DV%
<b>GI Health</b>	20 Billion CFUs	Invertase (400 SU), Lipase (500 FIP), Acid Maltase (14 MaltU), Peptidase (2 Ap), Bromelain from Pineapple Extract (3,600,000 FCC PU), Papain from Green Papaya Extract (900,000 FCC PU)		Medicinal Mushrooms	300 mg *
<b>Probiotic Blend</b>		Serrazimes™	20,000 SPU *	Turkey Tail, Reishi, Maitake, Cordyceps, Shitake, Agaricus	
Lactobacillus Acidophilus DDS, Bifidobacterium Bifidum, Bifidobacterium Lactis, Bifidobacterium Longum, Bifidobacterium Breve, Lactobacillus Gasseri, Lactobacillus Plantarum, Lactobacillus Salivarius, Lactobacillus Rhamnosus		Serrapeptase Enzyme		1,3 Beta-Glucan Isolate	150 mg *
<b>Prebiotic Fiber Blend</b>	<b>2500 mg</b>	<b>Immune System</b>	<b>2596 mg</b>	as BGF-Immune®	
Glucomannan	1000 mg *	<b>and Inflammatory Response Support</b>		Selenium	55 mcg 100%
as Propol®A Konjac Root Fiber		Immulox® Colostrum	1000 mg *	as Selenomethionine	
Larch Arabinogalactan Fiber	600 mg *	Curcumin	200 mg *	Zinc-L-Carnosine Complex	45 mg *
as ResistAid®		(Turmeric Extract)		as PepZin GI®	
Organic Agave Inulin Fiber	300 mg *	Vitamin C	400 mg 440%	<b>Leaky Gut and Detox Support</b>	<b>2360 mg</b>
Organic Digestion	500 mg *	as Non-GMO Ascorbic Acid Polyphenol - C®		Glutathione	100 mg *
Resistant Fiber		with Organic Fruit and Berry Polyphenols		as Setria® Glutathione	
Fenugreek	100 mg *	Citrus Bioflavonoids	100 mg *	L-Glutamine	1000 mg *
<b>Full Spectrum Digestive and Systemic Enzymes</b>		Organic Amla Extract	100 mg *	Humic and Fulvic Extracts	100 mg *
Protease I (21,000 HUT), Protease II (50 SAPU), Amylase (3,500 DU), Alpha-Galactosidase (150 GalU), Glucoamylase (9 AGU), Lactase (1,000 ALU),		Organic Acerola Extract	100 mg *	Ginger Extract	50 mg *
		(NAC) N-Acetyl Cysteine	100 mg *	(5% Gingerols)	
		Quercetin	50 mg *	Sunflower Lecithin	600 mg *
		Rutin	50 mg *	Fatty Acids and Phospholipids	
		Vitamin D3	50 mcg 250%	Cat's Claw	20 mg *
		as Cholecalciferol (2,000 IU)		Marshmallow Root	20 mg *
				Prune Powder Organic	400 mg *
				Qing Dai - Indigo Naturalis	50 mg *
				Slippery Elm Bark	20 mg *
<b>Other Ingredients:</b> Natural Fruit Flavors, Vanilla and Stevia Leaf Sweetener					

\*Percent Daily Value not established. Based on a 2,000 calorie per day diet.

REVO621